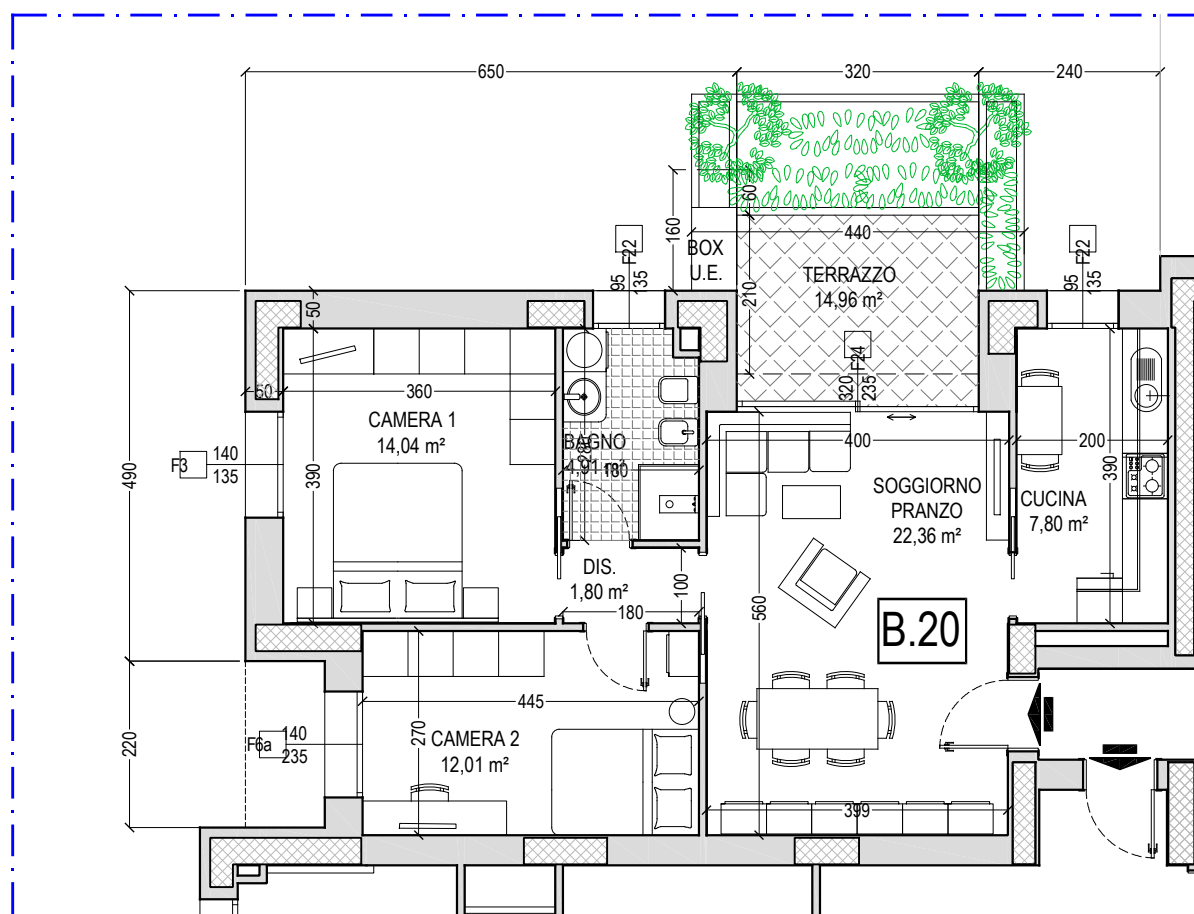


INTERVENTO RESIDENZIALE
RIALE NORD AR.s8 - Comparto C10.1 parte
ZOLA PREDOSA - Via Allende n. 2



APPARTAMENTO	79,90 x 100% =	79,90 mq
TERRAZZO	14,96 x 50% =	7,48 mq
SUPERFICIE LORDA COMMERCIALE TOTALE =		87,38 mq

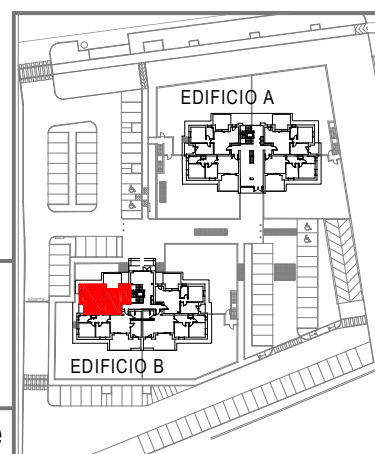
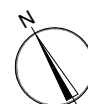


EDIFICIO B

ALLOGGIO B.20

PIANO QUARTO

Scala 1:100



NOTA: le misure sono indicative e possono subire variazioni in cantiere