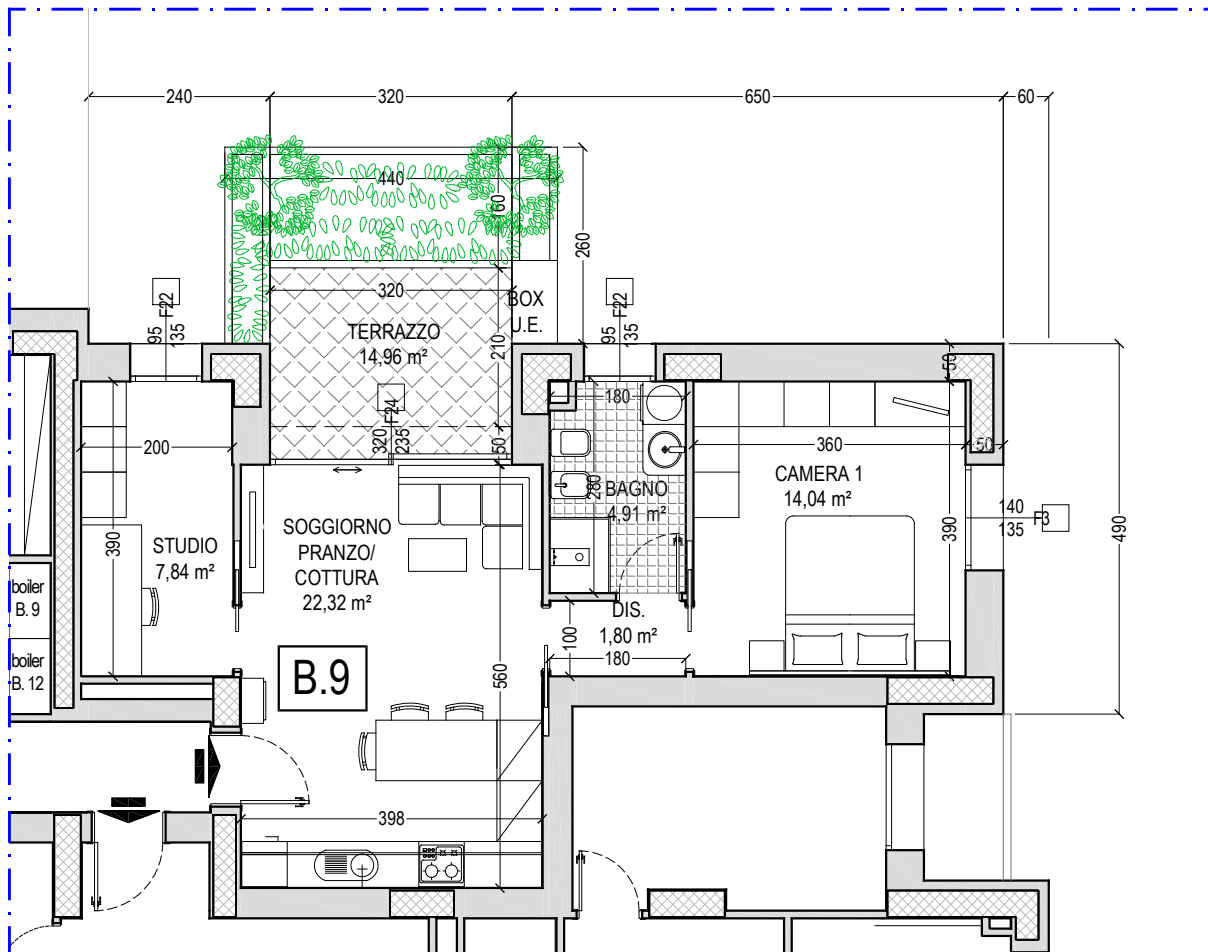


INTERVENTO RESIDENZIALE
RIALE NORD AR.s8 - Comparto C10.1 parte
ZOLA PREDOSA - Via Allende n. 2



APPARTAMENTO 66,01 x 100% = 66,01 mq
 TERRAZZO 14,96 x 50% = 7,48 mq
 SUPERFICIE LORDA COMMERCIALE TOTALE = 73,49 mq

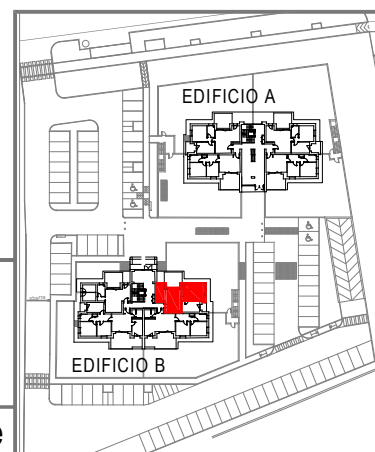
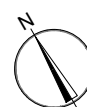


EDIFICIO B

ALLOGGIO B.9

PIANO SECONDO

Scala 1:100



NOTA: le misure sono indicative e possono subire variazioni in cantiere